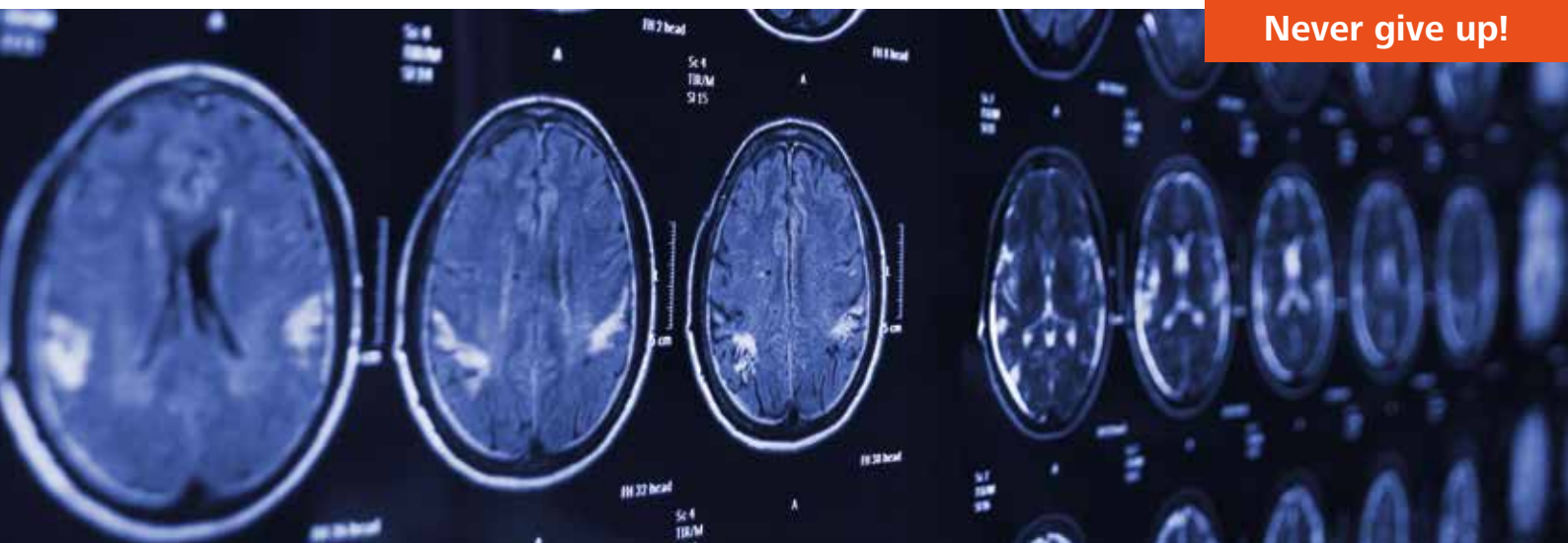


Kliniken Schmieder

Neurology and neurological rehabilitation

OUR CLINIC'S MOTTO:
Never give up!



high quality in neurological rehabilitation



WHAT DISTINGUISHES US

More than 75 years of experience in neurology and neurological rehabilitation

Kliniken Schmieder are distinguished by decades of experience in neurological rehabilitation. Prof. Friedrich Schmieder, who founded the group in 1950, was considered a pioneer in this field. Over the past 75 years, Kliniken Schmieder have continued to develop and improve their expertise and treatment options. The specialisation of Kliniken Schmieder makes the group the foremost expert in this field.

Holistic treatment with an interdisciplinary team

Kliniken Schmieder take a holistic approach and look at each patient individually. Therefore, a team consisting of nurses, doctors, therapists, and psychologists works together with the patient and his or her relatives. The primary goal of the entire team is to help the patient to regain as much independence as possible.

Specialised centres with the best professional expertise

Whether comprehensive diagnostic examination, brain stimulation, or treatment of sleep disorders – at Kliniken Schmieder patients receive this all from a single source. From the Intensive Care Unit with ventilation beds to early mobilisation and regaining independence in rehabilitation, patients are offered the appropriate treatments in all phases and for all degrees of severity.

Continuing education and research

Kliniken Schmieder strive to always offer their patients the best possible state-of-the-art treatment. Continuous research and training are the key to this goal. For this purpose, Kliniken Schmieder have founded their own training centre and run their own research institute in cooperation with the University of Constance.

OUR CLINIC'S MOTTO

Never give up!

➤ We want our clinic's motto to encourage our patients to take up and continue their personal struggle for neurofunctional improvements. We want the motto to give patients strength and hope, and also support their families, never to lose sight of the treatment goals.

Welcome!

Dear Ladies and Gentlemen,
dear Patients and Relatives,



Paul-Georg Friedrich
Chief Executive Officer (CEO)

For decades, Kliniken Schmieder have pursued their aim to provide neurological patients with the best possible treatment. Since 1950, we have been the quality leader in neurological rehabilitation and have worked hard for our excellent international reputation.

We are proud to welcome so many patients from all over the world each year to benefit from our range of medical services. They trust in us which commits us to provide best possible treatment. This treatment is always very individual and adjusted to each patient's needs. It is based on the latest scientific findings and methods.

We strive to give our patients a new quality of life. And we do our best to achieve this.

Kind regards,

A handwritten signature in blue ink that reads "Paul-Georg Friedrich". The signature is written in a cursive, flowing style.

Paul-Georg Friedrich
Chief Executive Officer (CEO)

Contents

8

OUR COMPETENCIES

Our treatment concept is holistic, interdisciplinary, and innovative.



12

OUR DOCTORS

Kliniken Schmieder treat patients in all neurological phases and with all severities.



14

INDICATIONS

We treat all existing neurological disorders and, for some conditions, have dedicated wards.



16

DIAGNOSTIC TOOLS

Our diagnostic high-tech equipment has university level and covers the full range.





18

TREATMENT

Kliniken Schmieder offer a broad range of treatments with more than a dozen treatment types and innovative strategies.



28

OUR CLINIC SITES

Our clinic sites are located amidst beautiful nature: at the shores of Lake Constance, near the metropolitan area of Stuttgart, and on the edge of a nature reserve near the university city of Heidelberg.



30

PATIENT ROOMS

The international departments of Kliniken Schmieder offer modern rooms, high-quality furnishings, excellent comfort, and high service quality.



32

IN THE HEART OF EUROPE

Located in close proximity of Switzerland, Austria, and France, the clinic sites are ideal starting points for a variety of leisure activities.

OUR COMPETENCIES

► Kliniken Schmieder treat neurological patients of all severities and in all acute and rehabilitation stages. As a quality leader, we set medical and therapeutic standards and advance them continuously in cooperation with our research institute.

Past and presence

In 1950, Prof. Friedrich Schmieder founded the first clinic in Gailingen which is located at the High Rhine close to the Swiss border. Prof. Dr. Friedrich Schmieder, the pioneer of neurological rehabilitation, was convinced that professional and intensive treatment would enable improvements of deficits even if the brain damage had existed for a long time. Current brain research proves that this assumption is true.

Today, Kliniken Schmieder with almost 2,300 employees working at six sites in South Germany treat about 14,500 neurological patients per year. We are internationally renowned for our decade-long experience in treating patients from all over the world, the high quality standards, and our willingness to do our best day after day.

Experience, advance, humanity

Experience, advance, and humanity are our most important pillars on which our work is based. They add up to trust – trust in the treatment, the doctors, the therapists, and the nurses. This is the only way to achieve our common goal to give our patients a new quality of life.

Research

In 1997, Kliniken Schmieder and the University of Konstanz founded the Lurija Institute for Rehabilitation Sciences and Health Research which has since conducted much research in neurological rehabilitation. The annual Schmieder Foundation award is granted to young scientists working in this field. Furthermore, we maintain numerous research cooperation relationships with the university medical centres of Freiburg, Heidelberg, Tuebingen, Mannheim, and Magdeburg.

Together with these university medical centres, we do research on behalf of our patients. We are committed to advance treatment methods and innovate therapeutic options.



➤ Our work focuses on medical treatment at the highest level, innovative treatment strategies, and humanity – the pillars of customised individual treatment strategy at Kliniken Schmieder



THE PHASE MODEL

▣ The phase model considers severity and duration of the disease and assigns all aspects of neurological rehabilitation to treatment phases. It was developed by the Kliniken Schmieder, was scientifically verified, and is now the standard of care in Germany.

Phase A/NRP-I: Acute treatment

The acute treatment is provided after an accident or illness and includes intensive medical care, if necessary. It is essential to help the patients quickly. The first few hours after an acute neurological event and the treatment of the patients at this stage are of major importance. Frequently, the vital functions are considerably affected. Quick and qualified specialist treatment of the patients, e.g. in a Stroke Unit, is urgently necessary.

Phase B/NRP-S: Early rehabilitation

In early rehabilitation, severely affected patients receive treatment and rehabilitative support. Due to the severity of their conditions, the patients still need intensive medical monitoring and treatment. Many different professionals (physicians of various specialties, therapists, intensive care nurses, social service providers etc.) work with the patient and his/her relatives to restore vital and sensorimotor functions, coordination as well as mental, cognitive, and psychic functions. Beds equipped with ventilators and intensive medical equipment are indispensable for this.

Phase C/NRP-M: Early mobilisation

The Phase C treatment (post-primary rehabilitation) focuses on the promotion of ADL competences (activities of daily living). The patients are able to cooperate and are medically stable but partly still need considerable nursing care. Interdisciplinary teams consisting of physicians, various therapists, nurses, and social service providers work together to develop a customised treatment for the patient's individual clinical picture.

Phases D/E / NRP-M:

Post-hospital curative treatment

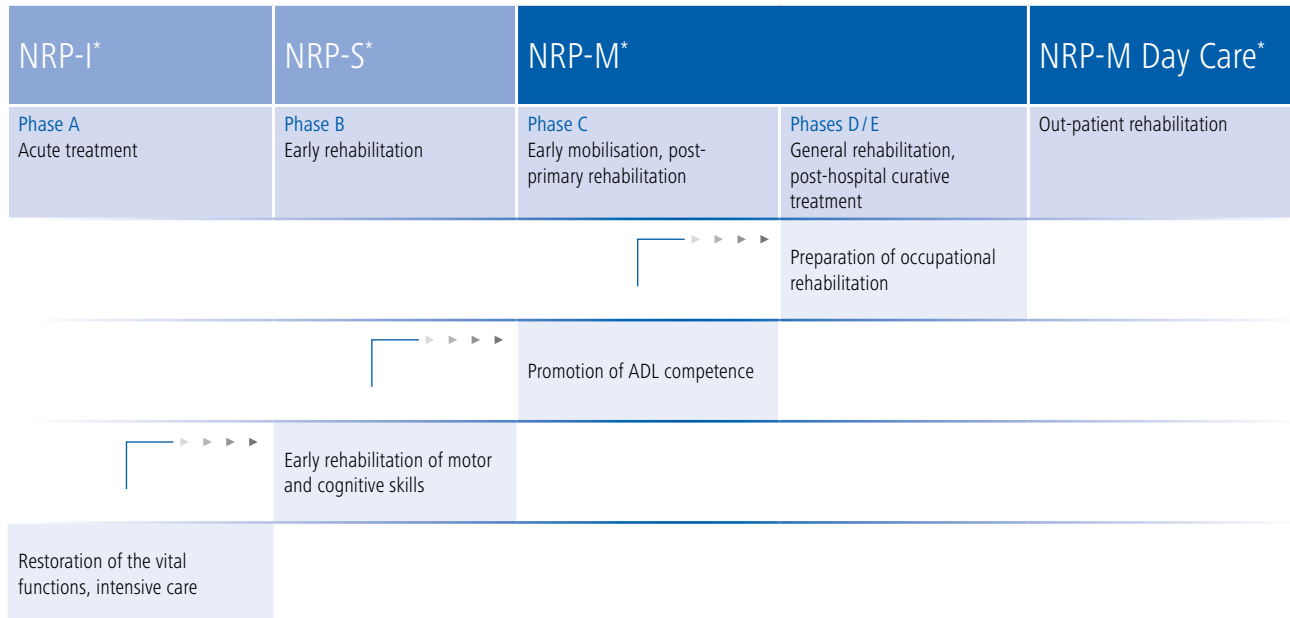
Phases D/E set the stage for the patient's vocational re-integration. The patients are largely independent as regards ADLs. Phases D/E focus e.g. on testing the vocational and professional competences, but also on practising mental and psychological functions, social competence, and leisure competence. In addition to vocational promotion or occupational re-training, full re-integration in the patient's professional environment can be addressed.



The phase model

HOSPITAL TREATMENT

REHABILITATION



*Neurological Rehabilitation Programme – Intensive: **NRP-I**

*Neurological Rehabilitation Programme for patients with **Severe** brain damage: **NRP-S**

*Neurological Rehabilitation Programme for patients with **Moderate** brain damage: **NRP-M**

*Neurological Rehabilitation Programme for patients with **Moderate** brain damage (Day Care): **NRP-M Day Care**



OUR MEDICAL TEAM

▣ Our physicians are passionate neurologists. In addition to their professional expertise and enthusiasm for their work, they ensure the quality of our standards in neurology and neurological rehabilitation and have further developed these standards over many years through research and accreditations.

At our four clinic locations in Konstanz, Gailingen, Gerlingen and Stuttgart, each site offers specialist clinical services in addition to our comprehensive neurological treatment. Our clinics in Konstanz and Gailingen are proud to be certified as Multiple Sclerosis Centres. Here, each patient receives a treatment plan and therapy programme tailored to their individual needs. This is made possible through the expertise of our multi-professional, interdisciplinary teams, including physicians, therapists, psychologists, and nurses.

Our clinics in Heidelberg and Allensbach welcome patients from all over the world with dedicated international teams and specialised wards.

Kliniken Schmieder in Heidelberg



PROF. DR. MED. MIRCEA A. SCHOENFELD is the Medical Director Neurorehabilitation in Heidelberg. He is a renowned scientist and experienced specialist in the field of neurology. His areas of expertise include cognitive neurology, clinical neurophysiology and the development of new and innovative therapeutic standards. He conducts basic research in the field of the visual system and investigates plastic processes that occur in the central nervous system in the event of lesions.



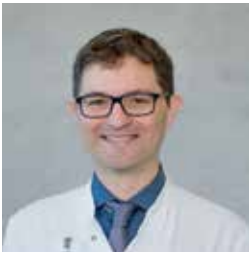
DR. MED. SILVIA POESSEL is Deputy Medical Director and responsible for international patients. She is an experienced neurologist and brings many years of expertise in the fields of rehabilitation and acute neurology to her role.



Kliniken Schmieder in Allensbach



PROF. DR. MED. JOACHIM LIEPERT is the Medical Director of the Neurorehabilitation (Phase C, D, Geriatric rehabilitation) in Allensbach and one of the leading specialists in neurological rehabilitation in Germany. He has treated international patients for many years. His key activities include stroke rehabilitation using innovative treatment strategies, clinical electrophysiology, movement disorders, and botulinum toxin therapies.



PROF. DR. MED. ANASTASIOS CHATZIKONSTANTINOU is the Medical Director of the Acute Neurology and the Early Neurological Rehabilitation in Allensbach. Post-stroke management as well as the full range of acute treatment of neurological conditions are his key activities. His research areas include epilepsy, stroke, and electrophysiology.



DR. MED. MICHAEL KAPS is Deputy Medical Director of the Department of Early Rehabilitation, which treats severely affected neurological patients. He has many years of experience in the management of international patients. His key activities include neurological intensive medicine, ventilator weaning, rehabilitation of patients with severe disturbances of consciousness, use of botulinum toxin, and diagnostic assessment and treatment of swallowing disorders.



DR. MED. OLYA NEUMANN is an experienced specialist in neurology. She is a senior physician responsible for the international patients. She speaks English, German, and Russian fluently. One of her special medical interests is the pharmacological and non-pharmacological stimulation of coma patients. Other activities include neurological diagnostics, differential diagnostics, neurological intensive medicine and rehabilitation as well as the treatment of traumatic and non-traumatic brain injuries.

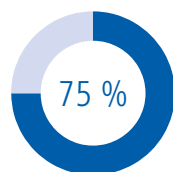


NEUROLOGICAL DISORDERS

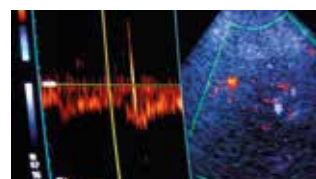
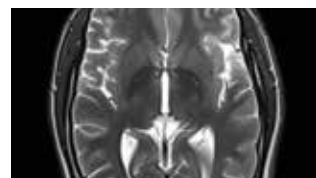
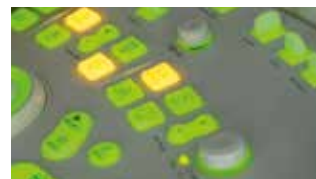
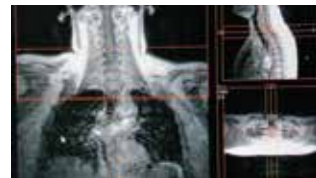
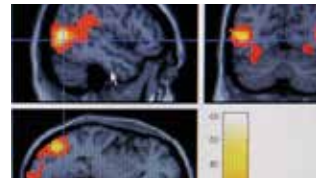
► Kliniken Schmieder provide acute and rehabilitation treatments of all neurological disorders of all severities. A high degree of specialisation, many years of experience, and intensive research allow for comprehensive treatment of all neurological indications at Kliniken Schmieder.

Disorders

- Treatment of acute and post-acute brain damage (e.g. sequelae of stroke, traumatic brain injury, brain tumour etc.);
- Inflammatory and immunological diseases of the central and peripheral nervous systems, treatment of multiple sclerosis;
- Treatment of neurodegenerative disorders (Parkinson's disease etc.);
- Spinal cord disease;
- Movement disorders, e.g. dystonia;
- Muscular disorders;
- Neurological pain syndrome;
- Neurological disorders accompanied by mental health disorders or psychosomatic disorders
- Rehabilitation after COVID-19
- and other neurological indications



OUR OUTCOMES: During rehabilitation, 75 percent of our patients improve their performance in at least three functional areas



➤ All world-wide existing neurological disorders are diagnosed and treated at Kliniken Schmieder using state-of-the-art medical high-tech equipment



OUR DIAGNOSTIC TOOLS

➤ An essential base of medical treatment is a thorough and reliable diagnostic assessment. Kliniken Schmieder dispose of the full range of sophisticated diagnostic tools and highly qualified staff. In addition to a magnetic resonance imaging system of the newest generation, the Kliniken Schmieder have a centre for sleep medicine on hand.

Range of diagnostic methods

- Neuroradiology (3 Tesla MRI/CT systems);
- Extra- and intra-cranial colour duplex sonography of the vessels supplying the brain;
- X-ray scanners;
- Neurophysiological diagnostic tools (EMG, EEG, evoked potentials);
- Standardised initial examination in physiotherapy and occupational therapy using validated methods;
- Diagnostic tools for speech/language and swallowing disorders;
- Diagnostic tools for neuropsychology, visual field test (perimetry);
- Diagnostic tests for internal medicine: ultrasound including Doppler echocardiography, gastroscopy including PEG insertion;
- Long-term ECG, prolonged blood pressure measurement, ergometry, lung function tests, sleep apnoea screening;
- Endoscopic examination of deglutition.

FACTS WORLD STROKE ORGANIZATION

EVERY SIX SECONDS, a person is killed by a stroke.

EVERY SECOND, a stroke occurs – regardless of age or gender.

APPROX 33 MILLION PEOPLE are affected by a stroke – many of them suffer from permanent disabilities.

.....

75 YEARS of experience in the treatment of stroke patients speak for Kliniken Schmieder.



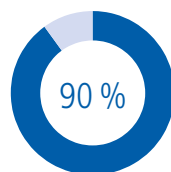
▣ High-performance medicine, the newest generation of medical technology, and specifically trained and skilled staff – the diagnostic range of services offered by Kliniken Schmierer is unique for neurological patients.

OUR RANGE OF THERAPIES

▣ Therapeutic treatment is of utmost importance in neurological rehabilitation. The patients re-learn motor, cognitive, and language skills. Inter-disciplinary teams provide individual therapy for the patients and adjust the treatment concepts to each patient's advances.

Therapies

- Medical therapy including drug treatment;
- Physiotherapy, sports therapy;
- Occupational therapy;
- Neuropsychology;
- Speech/language therapy, swallowing therapy;
- Physical therapy;
- Health education and dietary advice;
- Treatment and intensive care, nursing therapy;
- Innovative therapies: Lokohelp gait training, mirror therapy, CIMT, virtual reality, use of new feedback-guided devices for the upper extremities (Pablo, Armeo etc.), Vector system for sensor-controlled gait training and many more.



OUR OUTCOMES: 90 percent of our patients improve their performance in at least one area of every-day life



➤ Kliniken Schmieder offer their patients far more than a dozen different therapeutic disciplines – a unique range even in international comparison. A number of innovative treatments are added that are developed in direct collaboration with German university medical centres and our clinic-owned research institute



NURSING CARE

➤ Nursing care in neurological rehabilitation is based on a holistic approach. It usually differs from acute medical care and has a special position because of its closeness to the patients. Nursing care acts as a strong link to other professional groups – always with the aim of achieving as much independence as possible for the patients.

Activating care

An important task of the nursing staff is to activate and support the patient while providing nursing care in order to strengthen his or her independence in everyday life.

This refers, for example, to wakefulness, participation in everyday life on the ward, or taking over simple activities of self-care. The patients are encouraged to do as much as possible themselves depending on their capabilities and resilience.

An important part of the treatment in all phases

In [acute care and neurological early rehabilitation \(phases NRPI and NRPS\)](#), the focus is particularly on controlling and maintaining vital functions. Furthermore, wound care, the application of medicines and infusions as well as decubitus prophylaxis and activating care are among the tasks of the nursing staff.

In the [neurological phase NRPM \(rehabilitation\)](#), the patients are increasingly stable and independent, so that the main focus in this phase is on so-called activating therapeutic care. Here, the patient's resources are integrated in basic care activities and encouraged accordingly.



▣ Nursing care in rehabilitation is an important part of the patient's recovery process. It examines and promotes the patient's existing abilities and helps them not to lose sight of their individual goals.



MODERN TECHNOLOGY AND BEST PROFESSIONAL EXPERTISE

▣ The Department of Neuroradiology and Radiology at Kliniken Schmieder in Allensbach is the only specialised neuroradiology department in the Lake Constance region. The flagship is the 3 Tesla MRI scanner. The latest digital X-ray machine and a powerful CT scanner enable very precise diagnostics with low radiation exposure. Our patients benefit from optimal imaging, the latest equipment technology, and the highest level of professional expertise. We are specialised in imaging diagnostics of diseases of the central and peripheral nervous system, the vessels, the skull, the head / neck region, and the spine:

- Stroke, neurovascular diseases
- Dementias, Parkinson's disease, neurodegeneration
- Multiple sclerosis, demyelinating, and inflammatory diseases
- Brain and spinal cord tumours, neuro-oncology
- Eye / orbita, hearing, and vestibular organs
- Neuromuscular / musculoskeletal diseases
- Pain, minimally invasive CT-guided pain treatment of the spine

Of course, we also provide imaging of the entire body.



PROF. DR. MED. CHRISTOPH STIPPICH has been the medical director of the department since October 2020. He is a specialist in diagnostic and interventional neuroradiology and radiology with more than 20 years of professional experience.



▣ Prof. Stippich has developed special examination protocols for the various diseases that answer the medical questions posed to us as accurately as possible and provide reproducible results for follow-up examinations.



CENTRE FOR SLEEP MEDICINE AT KLINIKEN SCHMIEDER

► Neurological diseases such as stroke, multiple sclerosis, Parkinson's disease, and neuromuscular diseases are particularly often associated with sleep disorders. Primary neurological sleep disorders include narcolepsy, restless legs syndrome, and periodic limb movement in sleep disorder. Since sleep disorders can compromise the healing process and lead to increased suffering, quick assessment and treatment are important.

Diagnostic and treatment of sleep disorders

Thanks to the available staff and medical technologies, Kliniken Schmieder in Allensbach are able to diagnose and treat all forms of sleep disorders. The sleep laboratory is equipped with state-of-the-art medical technology including infra-red cameras, body position sensors, and a digital recording station. After the diagnostic procedures, each patient receives individual treatment. Depending on the severity of the sleep-wake phase disorder and his/her situation in life, the patient is treated with the help of different measures, like psychotherapeutic, chrono-biological, or pharmacological measures.



DR. MANUEL EGLAU main areas of expertise include diagnostics and differential diagnostics as well as treatment of sleep disorders.



➤ Sleep disorders are among the most common complaints in the population. More than 90 different sleep disorders have now been described which are mainly associated with problems falling asleep and maintaining sleep and/or excessive daytime sleepiness.



BRAIN STIMULATION CENTRE

➤ Subsequent to an accident, illness, or other serious event, the brain is often severely damaged, resulting in coma or disorders of consciousness. The Brain Stimulation Centre at Kliniken Schmieder is specialized in diagnosing what condition the patient is in and to what kind of treatment a patient will respond.

Diagnostic process

A thorough diagnostic programme stands at the beginning. We utilize the expertise of our medical professionals as well as state-of-the-art diagnostics. The process is documented using the Coma Recovery Scale, an assessment method developed for patients with disorders of consciousness.

Treatment and therapy

Based on the results of the diagnostic assessments, our team decides which form of stimulation is most suitable for the patient's condition.

Non-invasive brain stimulation includes the stimulation of the brain using electrical or pharmacological impulses. The aim of pharmacological stimulation is to increase the patient's consciousness with the help of medication. In transcranial direct current stimulation (tDCS), the brain is stimulated by electrodes attached to the scalp.

Pharyngeal stimulation is used to treat swallowing disorders. The electrical stimulation is intended to improve the patient's ability to swallow.



➤ The Brain Stimulation Centre at Kliniken Schmieder combines the necessary skills and tools and, in addition, cooperates with international experts such as Prof. Steven Laureys from the Coma Science Group in Belgium.



OUR CLINIC SITES

▶ In observance of a holistic treatment concept, Kliniken Schmieder incorporate the surroundings and thus nature in the healing process. All clinic sites are therefore located in scenic surroundings, amidst large forestlands, or bordering such areas. Metropolitan areas like Stuttgart, old German university cities like Heidelberg or Tuebingen, the location at the shores of Lake Constance, or the close vicinity to Switzerland and the Alps offer a variety of leisure activities for our patients' relatives and friends.

Wards for international patients

- Multi-lingual staff: standard treatment in English; on request: speech/language therapy and translators for Arabic and Russian;
- Culture-specific and individual services, e.g. meals, offers for Ramadan;
- Advice and support with questions regarding drugs, passport matters, medical reports, taxi transfers, organisation of patient transport ambulances;
- Advice and support for leisure-time programme in Konstanz, Stuttgart, Switzerland, Zurich etc.;
- Interpreters for English, Russian, and Arabic.


Our clinic sites



➤ Our clinics are magnificently located – bordering nature reserves, water, or forest-land. These exceptional locations support the healing process since neurologically impaired patients need a protected environment where they can gradually re-gain health and strength



PATIENT ROOMS

▶ Apartments with modern and high-quality furnishings are available on our comfort wards. All apartments are equipped with HD wide screen TV, safe, and refrigerator. They offer a marvellous view and a spacious bathroom.

Services and equipment

In addition to high-quality furnishings, we offer superior service quality in a pleasant hotel-like atmosphere. This includes e.g. a range of special food and drinks.

More than 1,000 international TV programmes, a selection of international newspapers and magazines from our patients' cultural regions, and a great variety of dishes are available for our patients and guests.

- Coffee and cake (Lounge);
- Fruit basket and various fruit juices as well as non-alcoholic beverages;
- Selection of international newspapers and magazines;
- Free WiFi access;
- Hair dryer; dressing gown; care kit with soap, shower gel etc.



Patient rooms



➤ High-quality furnishings and exclusive service characterise our comfort wards. We want every patient to feel comfortable right from the beginning of the stay



IN THE HEART OF EUROPE

▶ All our clinics are located near tourist highlights and in beautiful landscapes – in the heart of Europe, in close vicinity to Switzerland, Austria, Italy, and France.

Lake Constance – Switzerland – Austria

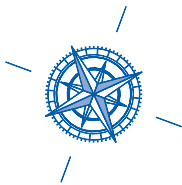
Three of our clinics are located at Lake Constance near the Swiss Alps; the metropolitan area of Zurich is just a few kilometres away. The mild climate and the gorgeous nature are ideal to recuperate and recover from a severe neurological disorder.

There are numerous tourist attractions nearby, e.g. the flower island of Mainau, the Zeppelin museum in Friedrichshafen, the World Cultural Heritage of the island of Reichenau, the world's largest open-air stage in Bregenz, Austria, and the natural spectacle of the Rhine falls in Schaffhausen, Switzerland.

Heidelberg and Stuttgart

Our clinic in Heidelberg is located in one of the oldest university cities of Europe. Year by year, the old quarter of Heidelberg with its famous castle attracts many people from all over the world.

Kliniken Schmieder Stuttgart is located near a nature reserve. The city is renowned as the centre of the German automotive industry and is the home of large companies such as Mercedes-Benz and Porsche. In addition, renowned art museums and the pulsating life of a German metropolis offer many opportunities to spend one's leisure time.



CENTRAL LOCATION OF THE CLINIC SITES


- **Metropolitan areas:** just a few kilometres away from metropolitan areas such as Zurich, Frankfurt, Baden Baden, Stuttgart, Munich, Strasbourg;
- **Tourist highlights:** World Cultural Heritages, castles and monasteries, museums, cultural landscapes;
- **Leisure activities:** golf, sailing, concerts, casinos, sports.



➤ The internationally renowned metropolitan areas of Zurich, Stuttgart, and Heidelberg (from top to bottom) are cosmopolitan and pulsating cities with abundant history, culture, art, and many places of interest – and just a few kilometres away from our clinic sites


 YOUR CONTACT

International Office Allensbach

 +49 7533 808-1533

 international@kliniken-schmieder.de

International Office Heidelberg

 +49 6221 6540-585

 international@kliniken-schmieder.de



Contact us
via WhatsApp

